

POST SIZE	AREA (mm <sup>2</sup> )	I (mm <sup>4</sup> )	S (mm <sup>3</sup> )	A	B	C	D	E	MOMENT*
2.98 kg/m	354.8	66 597	3 114	38.2	79.4	31.8	2.9	2.9	1260 N·m
3.72 kg/m	445.2	87 409	4 261	39.3	79.4	31.8	4.1	3.3	1720 N·m
4.46 kg/m	554.8	141 518	5 899	44.4	88.9	41.3	4.1	3.8	2380 N·m
5.96 kg/m	741.9	187 304	7 702	46.0	88.9	41.3	5.6	4.1	3100 N·m

\* REDUCE MOMENT CAPACITY BY 25% TO ACCOUNT FOR TORSION EFFECTS IN OPEN CROSS-SECTION SINGLE POST INSTALLATIONS.

POSTS SHALL BE PRODUCED FROM HIGH STRENGTH RAIL STEEL ACCORDING TO ASTM A-499, HAVING A 480 MPa MINIMUM YIELD (SEE TABLE 1).

SIGN POSTS SHALL BE PUNCHED THEIR FULL LENGTH WITH 9 mm Ø HOLES ON 25 mm CENTERS.

BASE POSTS SHALL BE PUNCHED WITH A MINIMUM OF THIRTY-SIX 9 mm Ø HOLES ON 25 mm CENTERS (TO ACCOMMODATE OPTIONAL SOIL PLATE) WITH THE FIRST HOLE 25 mm FROM THE TOP.

BASE POSTS SHALL BE DRIVEN TO 965 mm MINIMUM EMBEDMENT (SEE TABLE 2); A MAXIMUM 100 mm MAY PROTRUDE ABOVE THE SURROUNDING GROUND SURFACE.

POSTS SHALL BE HOT-DIP GALVANIZED AFTER FABRICATION IN ACCORDANCE WITH ASTM A-123.

SPLICE HARDWARE SHALL BE AS SUPPLIED OR RECOMMENDED BY THE MANUFACTURER, CADMIUM PLATED ACCORDING TO ASTM A-165, TYPE OS, EXCEPT USING CLEAR CHROMATE.

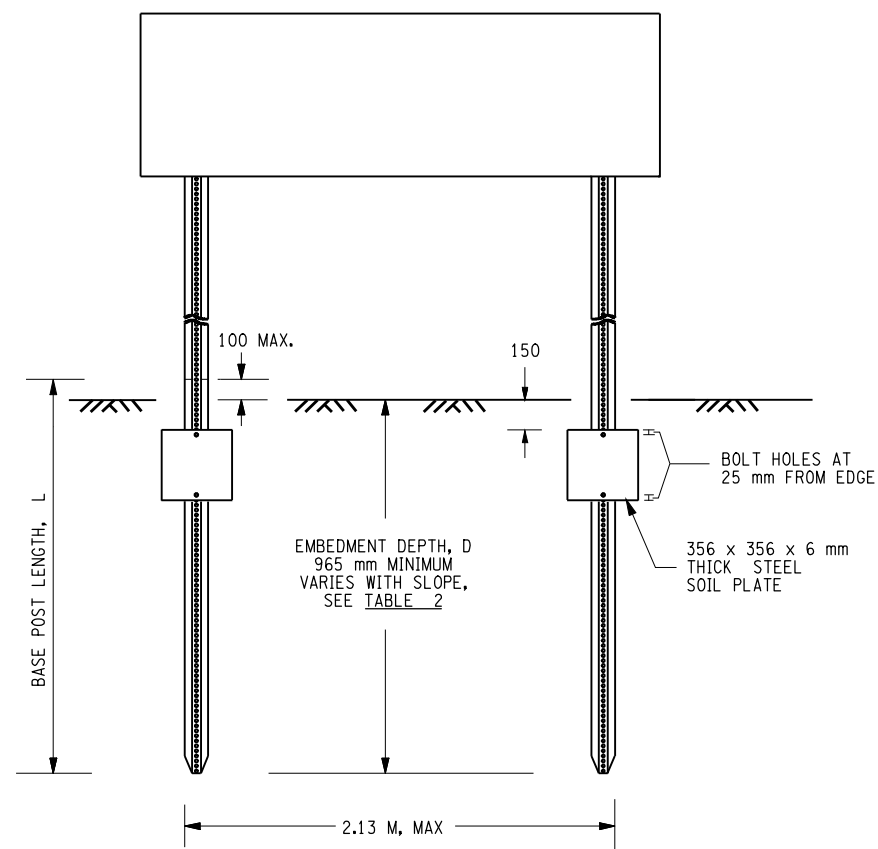
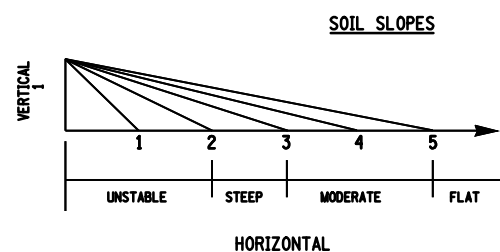
ALL GALVANIZING AND GALVANIZING REPAIRS SHALL BE DONE IN ACCORDANCE WITH §719-01, TYPE III.

AN S-1 SOIL CONDITION SHOULD BE ASSUMED. S-1 INCLUDES SANDS, GRAVELS AND SILTS (AND THEIR MIXTURES) WHICH EXHIBIT PENETRATION VALUES OF 9 OR MORE BLOWS PER 305 mm USING A STANDARD 136 kg DROP HAMMER AND A 457 mm FALL. SHOULDER MATERIALS ARE INCLUDED IN THIS CATEGORY.

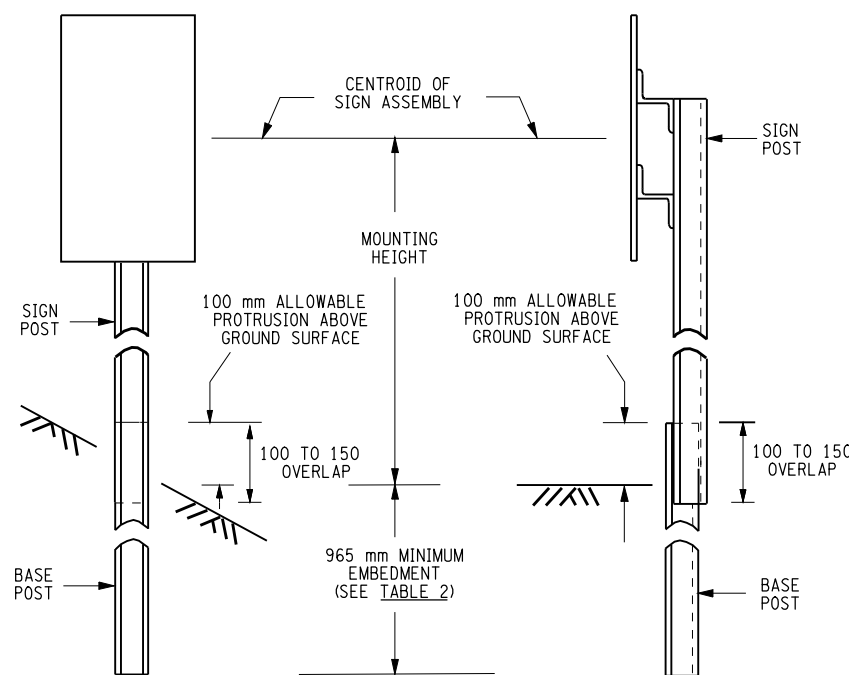
S-2 INCLUDES UNIFORM SANDS WHICH EXHIBIT PENETRATION VALUES OF LESS THAN 9 BLOWS PER 305 mm USING A 136 kg DROP HAMMER. BEACH SANDS ARE INCLUDED IN THIS CATEGORY.

THE GEOTECHNICAL ENGINEERING BUREAU AND THE STRUCTURES DIVISION SHOULD BE CONTACTED WHEN A POST IS TO BE PLACED IN A PLASTIC (SOFT CLAY OR ORGANIC) DEPOSIT, OR WHEN THE GROUNDWATER ELEVATION IS WITHIN THE MINIMUM EMBEDMENT

EMBEDMENT TYPE	SOIL SLOPE	SOIL DESCRIPTION					
		S - 1 NON-PLASTIC (MED TO VERY COMPACT)			S - 2 NON-PLASTIC (LOOSE TO VERY LOOSE)		
		MAX NO. POSTS	MIN. EMBEDMENT	SOIL ρ	MAX NO. POSTS	MIN. EMBEDMENT	SOIL ρ
ERECT-EASE	FLAT	2	965	NO	1	965	YES
	MODERATE	2	1375	NO	1	1375	YES
	STEEP	2	1525	NO	1	1525	YES
BASE BOLTED OR BRACER BAR	FLAT	3	965	NO	3	965	YES
	MODERATE	3	1375	NO	3	1375	YES
	STEEP	3	1525	NO	3	1525	YES



SOIL PLATE DETAIL



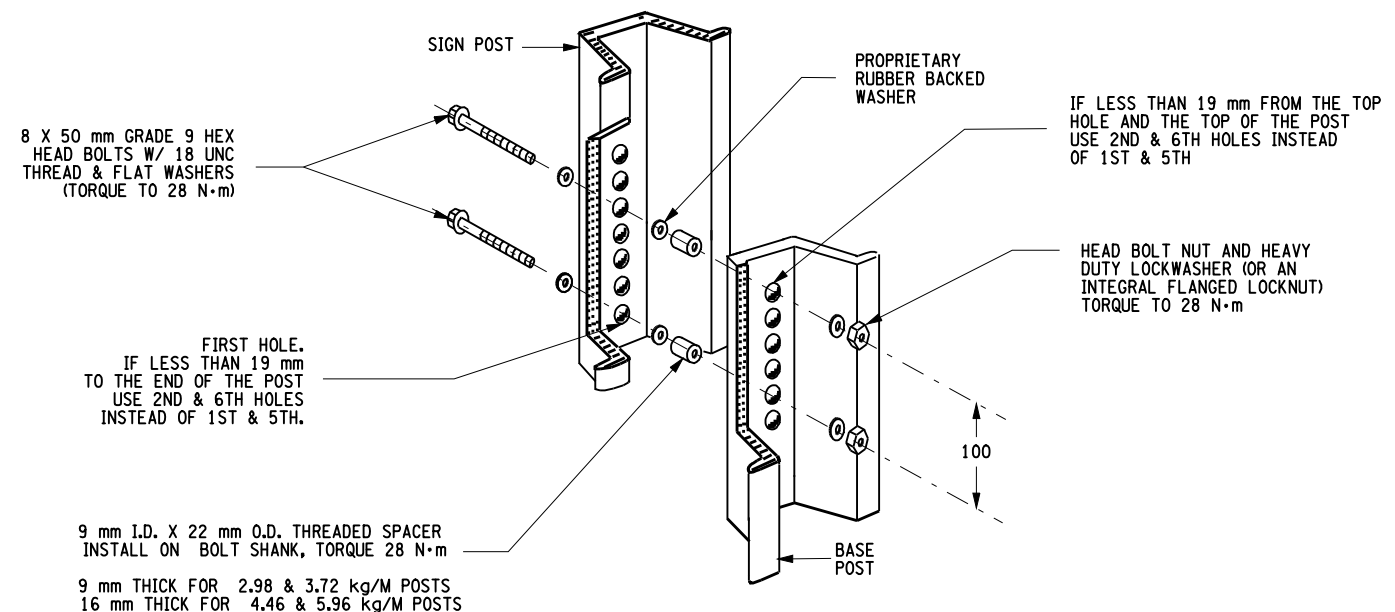
STEEP SLOPES

GENTLE SLOPES

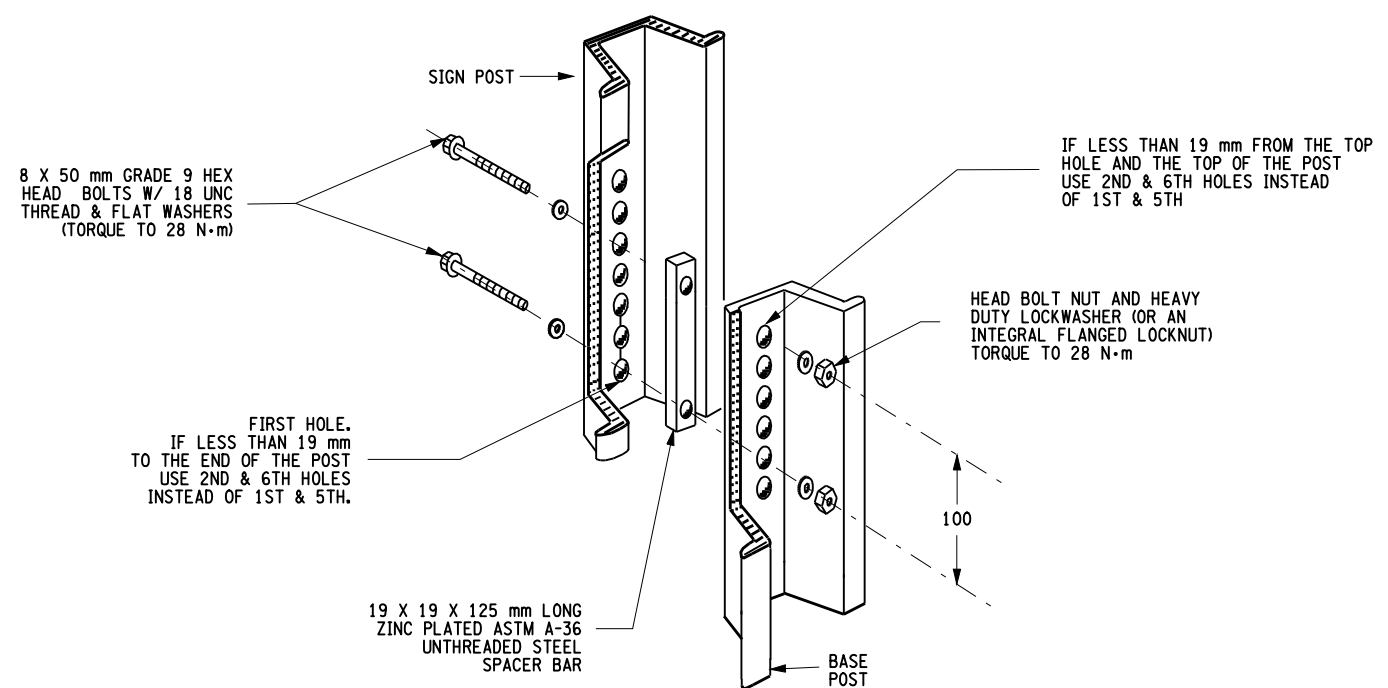
EMBEDMENT DETAILS

THESE DETAILS ARE SKETCH DRAWINGS AND ARE NOT TO SCALE DIMENSIONS ARE IN MILLIMETERS UNLESS OTHERWISE NOTED

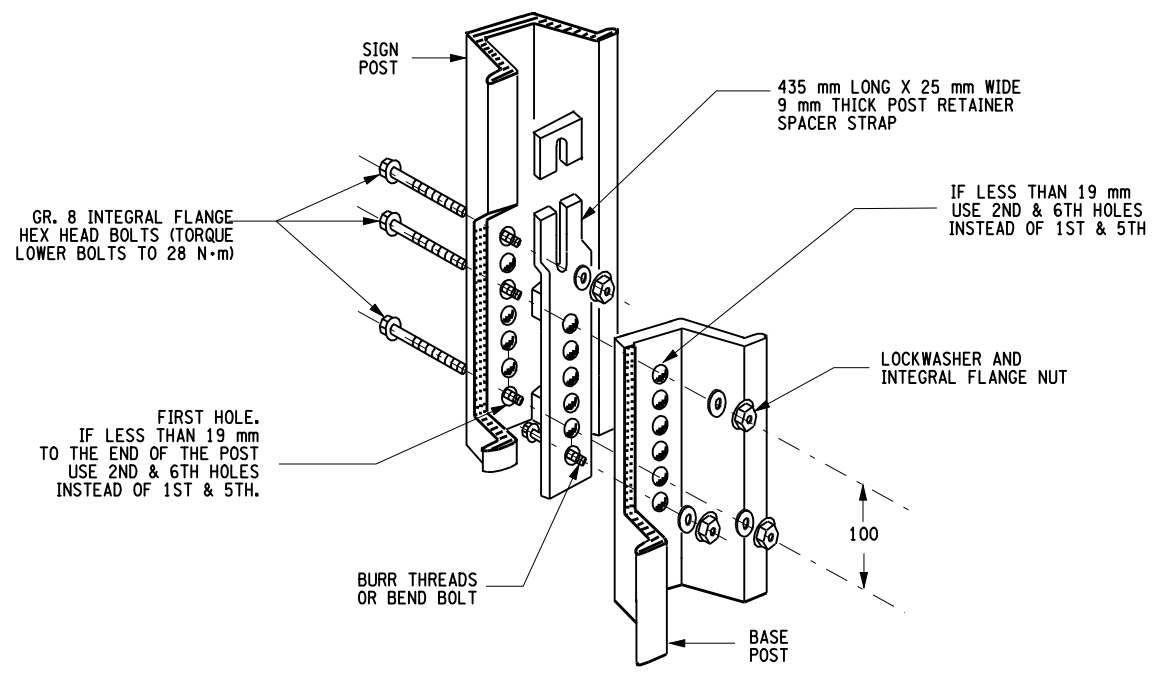
 STATE OF NEW YORK DEPARTMENT OF TRANSPORTATION	
MATERIALS DETAILS FOR TYPE A SIGN SUPPORTS	
CHICAGO HEIGHTS STEEL U CHANNEL SIGN SUPPORTS STANDARD CAPACITY	
SHEET 1 OF 5	
ISSUED UNDER EB 06-021 EFFECTIVE: 05/02/2006 REVISION:	MD645M-CHS-01



BASE-BOLTED SAFETY SPLICE




BRACER BAR SPLICE



ERECT-EASE SPLICE

THESE DETAILS ARE SKETCH DRAWINGS AND ARE NOT TO SCALE DIMENSIONS ARE IN MILLIMETERS UNLESS OTHERWISE NOTED

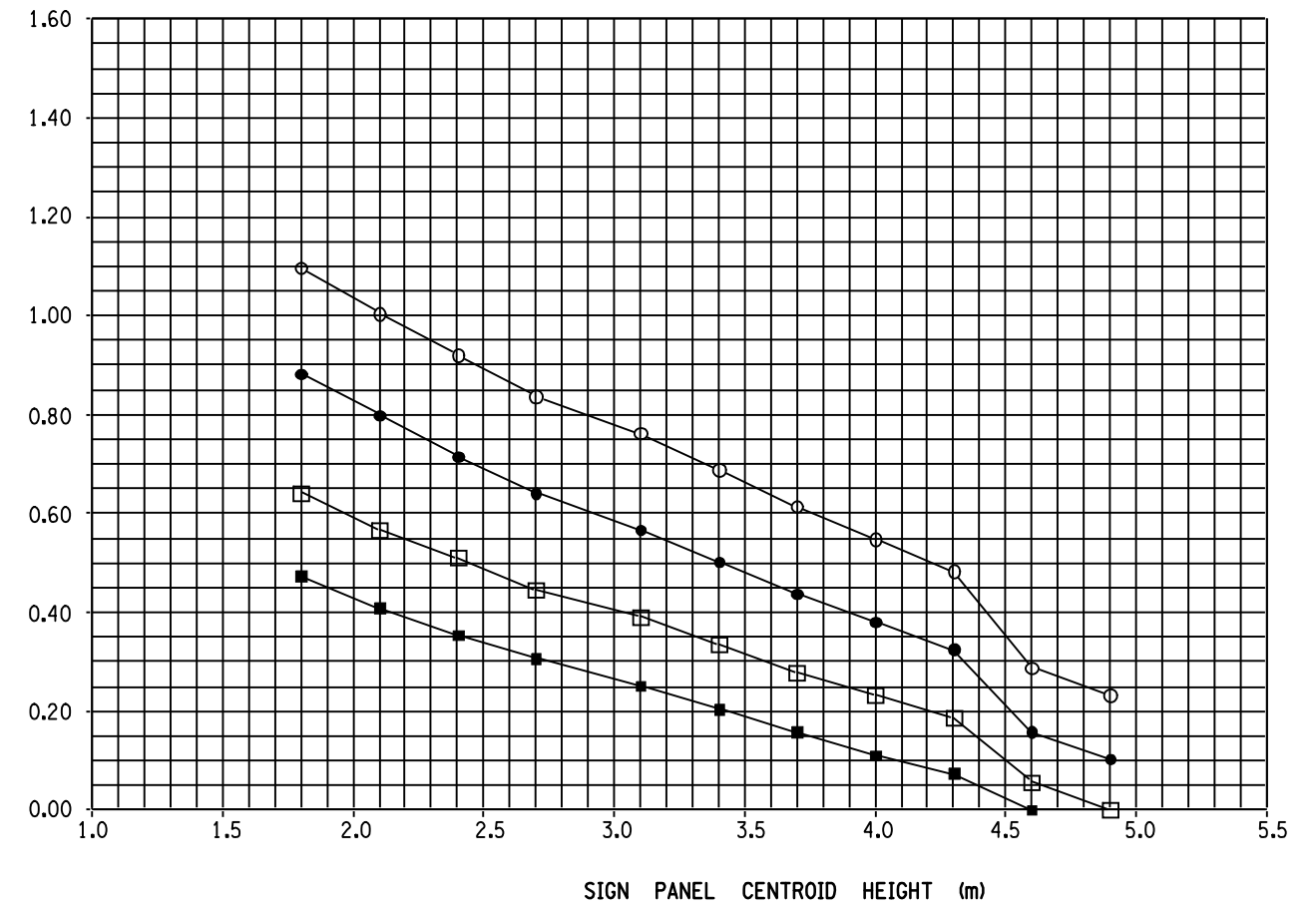
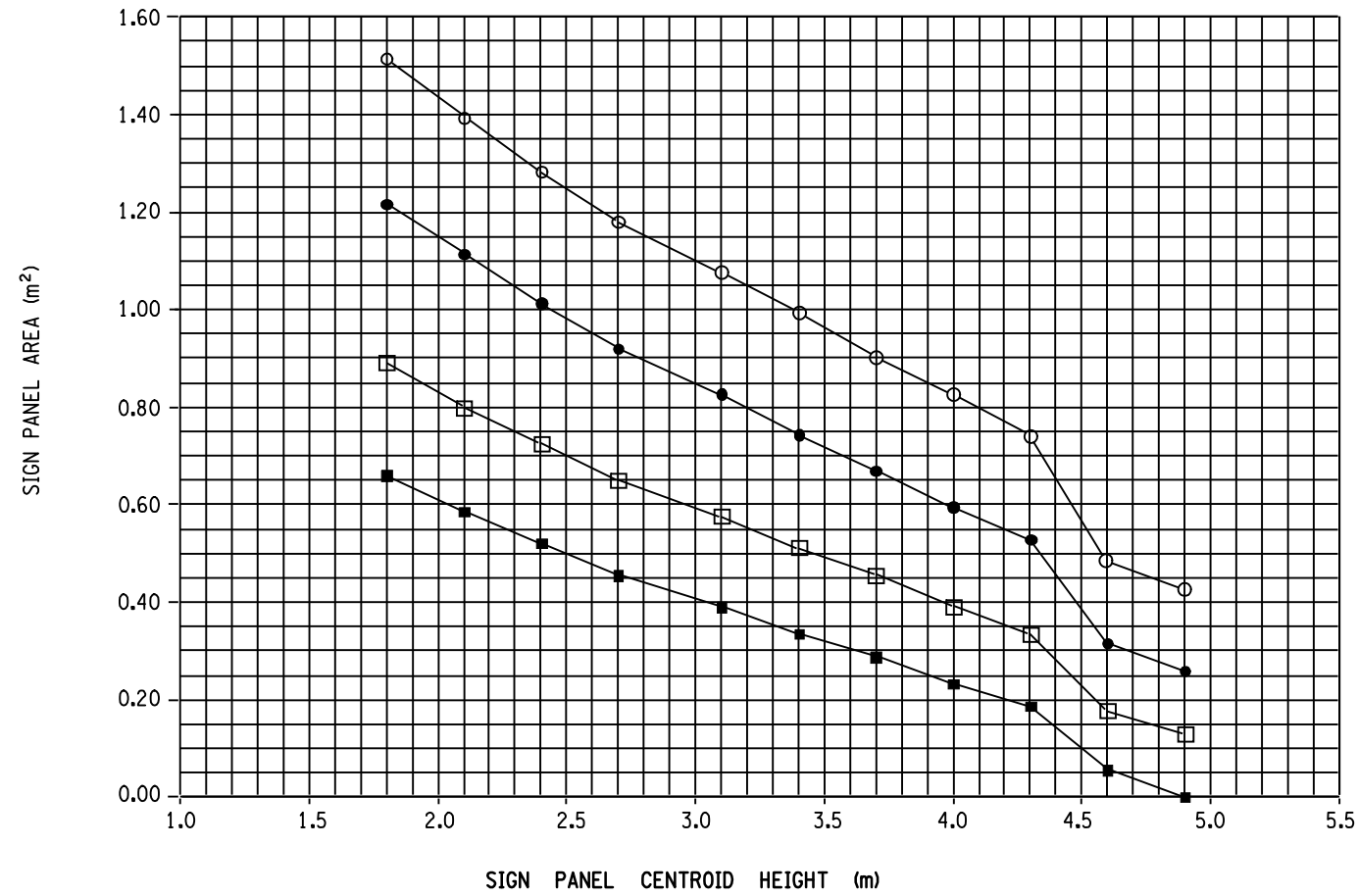
 <b>STATE OF NEW YORK</b> <b>DEPARTMENT OF TRANSPORTATION</b>	
<b>MATERIALS DETAILS FOR TYPE A SIGN SUPPORTS</b>	
CHICAGO HEIGHTS STEEL U CHANNEL SIGN SUPPORTS STANDARD CAPACITY	
SHEET 2 OF 5	
ISSUED UNDER EB 06-021 EFFECTIVE: 05/02/2006 REVISION:	MD645M-CHS-02

FILE NAME = IP:\PWP\dms61672\CHI\M.STDL.SHEET2.DGN  
 DATE/TIME = 05-MAY-2006 14:07  
 USER = ofr-ank

SINGLE POST

97 km/h WIND SPEED

113 km/h WIND SPEED



- 5.96 kg/m POST
- 4.46 kg/m POST
- 3.72 kg/m POST
- 2.98 kg/m POST

CAUTION : ALLOWABLE SIGN PANEL AREAS ARE CALCULATED ASSUMING SITE ELEVATIONS CLOSE TO THE SURROUNDING TERRAIN.  
 FOR ELEVATED SITE CONDITIONS (E.G. OVERPASSES, HIGH CONTOUR AREAS) WHERE THE INFLUENCE OF THE GROUND ON THE WIND IS REDUCED, ALLOWABLE SIGN PANEL AREAS MUST BE REDUCED (AS MUCH AS 40%) ACCORDING TO THE AASHTO "STANDARD SPECIFICATIONS FOR STRUCTURAL SUPPORTS FOR HIGHWAY SIGNS, LUMINAIRES AND TRAFFIC SIGNALS", UNDER THE SECTION "LOADS".  
 USE AN INCREASED WIND PRESSURE FOR SIGN PANEL CENTROID HEIGHTS 8.84 m OR MORE ABOVE THE SURROUNDING TERRAIN, AS FOLLOWS:

ZONE A (REGIONS 1,2,6,8 AND 9): 977 N/m<sup>2</sup>  
 ZONE B (REGIONS 3,4,5,7,10 AND 11): 1321 N/m<sup>2</sup>

THESE DETAILS ARE SKETCH DRAWINGS AND ARE NOT TO SCALE  
 DIMENSIONS ARE IN MILLIMETERS UNLESS OTHERWISE NOTED

STATE OF NEW YORK  
 DEPARTMENT OF TRANSPORTATION

MATERIALS DETAILS FOR TYPE A SIGN SUPPORTS

CHICAGO HEIGHTS STEEL  
 U CHANNEL SIGN SUPPORTS  
 STANDARD CAPACITY

SHEET 3 OF 5

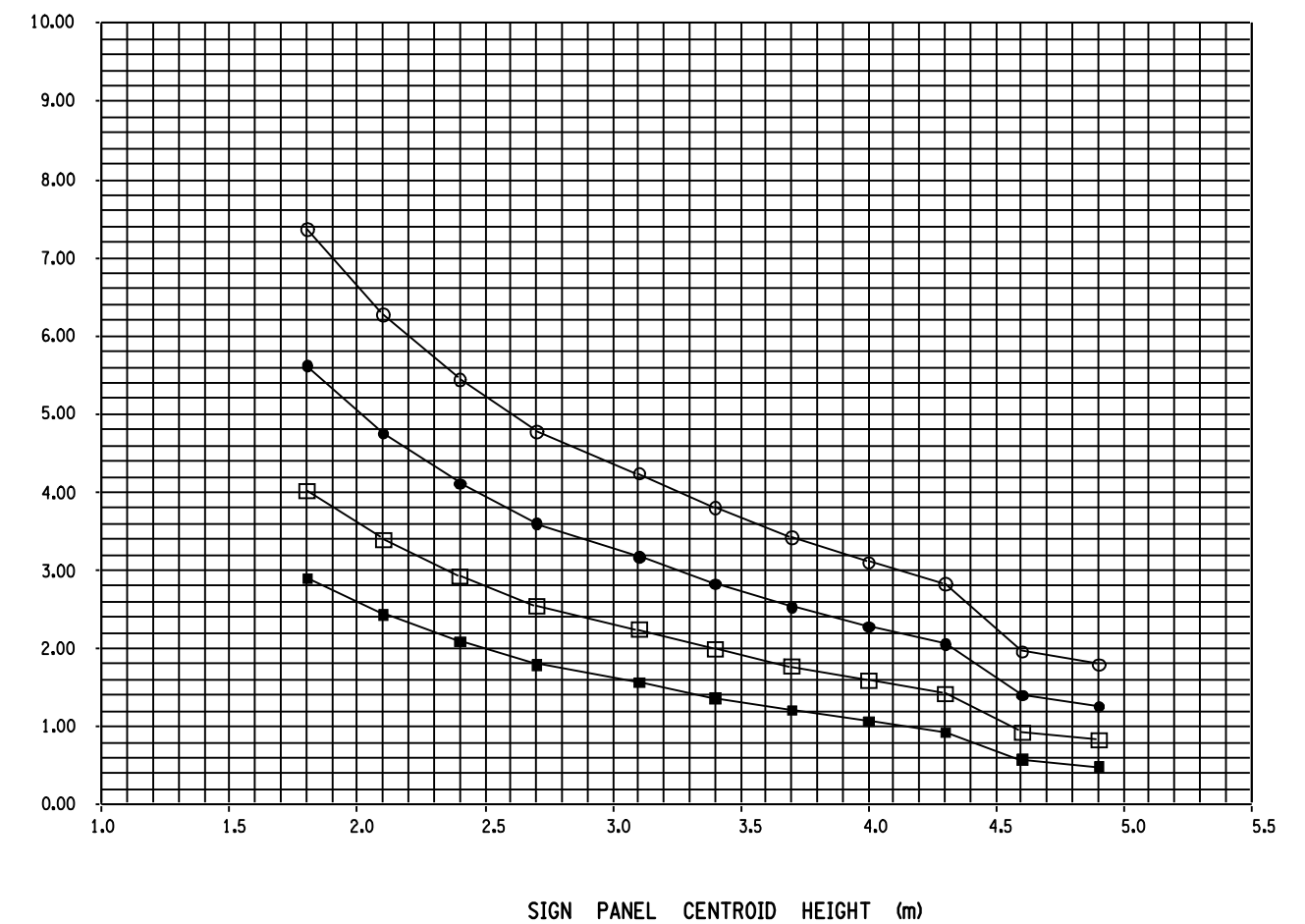
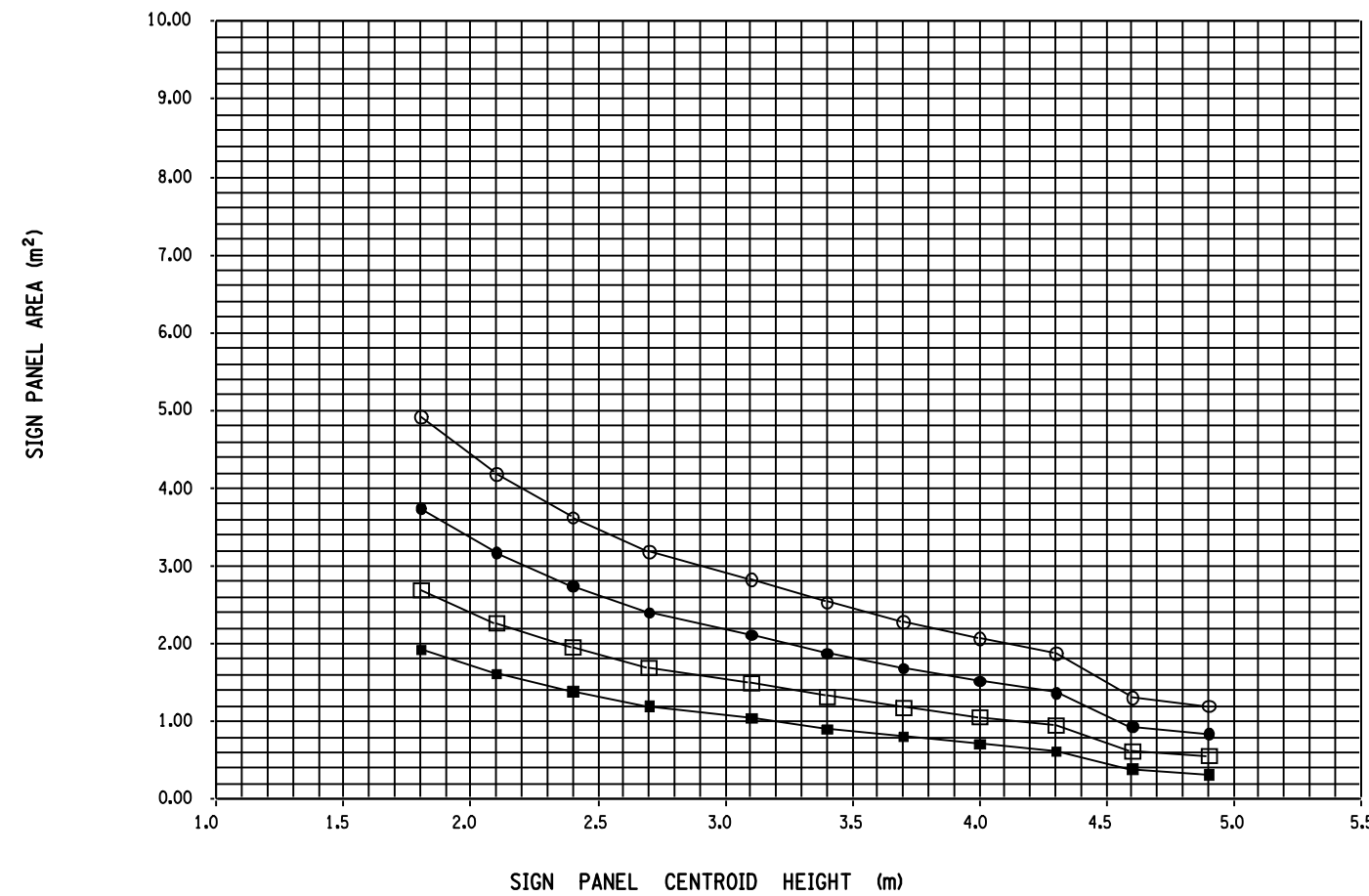
ISSUED UNDER EB 06-021  
 EFFECTIVE: 05/02/2006  
 REVISION:

MD645M-CHS-03

97 km/h WIND SPEED

DOUBLE POST

TRIPLE POST




- 5.96 kg/m POST
- 4.46 kg/m POST
- 3.72 kg/m POST
- 2.98 kg/m POST

CAUTION : ALLOWABLE SIGN PANEL AREAS ARE CALCULATED ASSUMING SITE ELEVATIONS CLOSE TO THE SURROUNDING TERRAIN.  
 FOR ELEVATED SITE CONDITIONS (E.G. OVERPASSES, HIGH CONTOUR AREAS) WHERE THE INFLUENCE OF THE GROUND ON THE WIND IS REDUCED, ALLOWABLE SIGN PANEL AREAS MUST BE REDUCED (AS MUCH AS 40%) ACCORDING TO THE AASHTO "STANDARD SPECIFICATIONS FOR STRUCTURAL SUPPORTS FOR HIGHWAY SIGNS, LUMINAIRES AND TRAFFIC SIGNALS", UNDER THE SECTION "LOADS".  
 USE AN INCREASED WIND PRESSURE FOR SIGN PANEL CENTROID HEIGHTS 8.84 m OR MORE ABOVE THE SURROUNDING TERRAIN, AS FOLLOWS:

ZONE A (REGIONS 1,2,6,8 AND 9): 977 N/m<sup>2</sup>  
 ZONE B (REGIONS 3,4,5,7,10 AND 11): 1321 N/m<sup>2</sup>

THESE DETAILS ARE SKETCH DRAWINGS AND ARE NOT TO SCALE  
 DIMENSIONS ARE IN MILLIMETERS UNLESS OTHERWISE NOTED

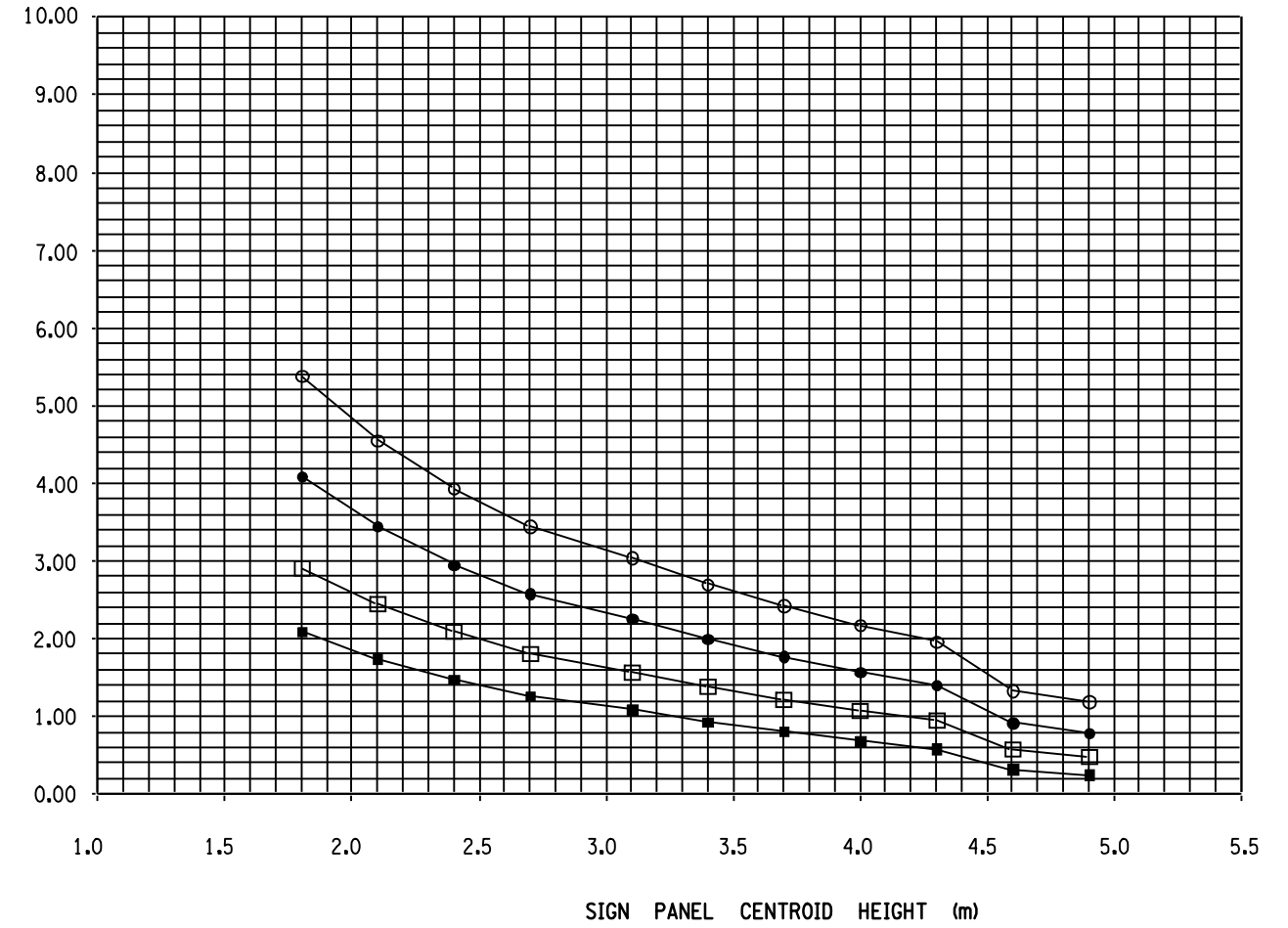
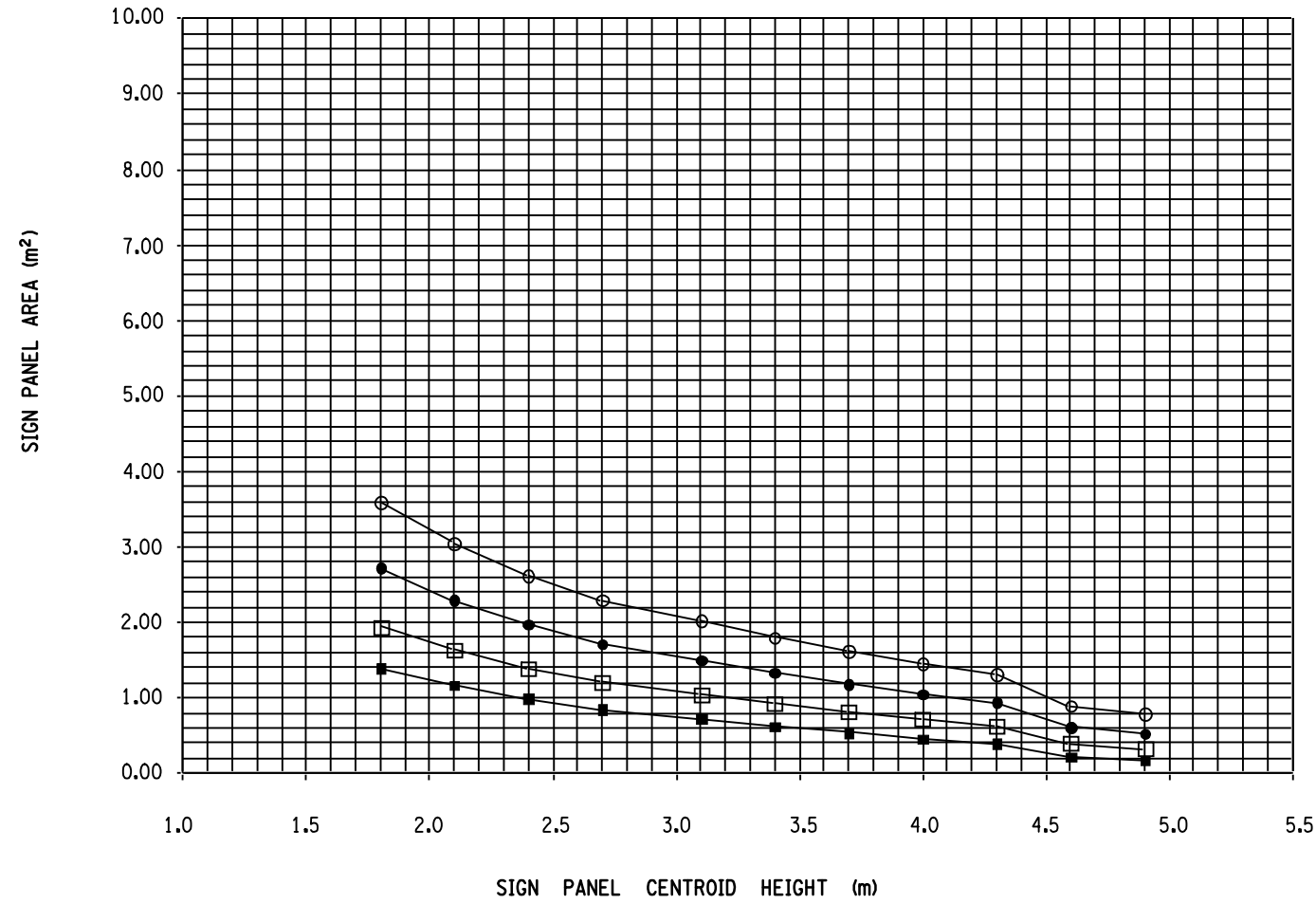
 <p><b>STATE OF NEW YORK</b> DEPARTMENT OF TRANSPORTATION</p>	
<p>MATERIALS DETAILS FOR TYPE A SIGN SUPPORTS</p>	
<p>CHICAGO HEIGHTS STEEL U CHANNEL SIGN SUPPORTS STANDARD CAPACITY</p>	
<p>SHEET 4 OF 5</p>	
<p>ISSUED UNDER EB 06-021 EFFECTIVE: 05/02/2006 REVISION:</p>	<p>MD645M-CHS-04</p>

FILE NAME = IP-PWP\dms61672\CHI.L.M.STDL.SHEET4.DGN  
 DATE/TIME = 05-MAY-2006 14:07  
 USER = ofr-ank

113 km/h WIND ZONE

DOUBLE POST


TRIPLE POST



- 5.96 kg/m POST
- 4.46 kg/m POST
- 3.72 kg/m POST
- 2.98 kg/m POST

CAUTION : ALLOWABLE SIGN PANEL AREAS ARE CALCULATED ASSUMING SITE ELEVATIONS CLOSE TO THE SURROUNDING TERRAIN.  
 FOR ELEVATED SITE CONDITIONS (E.G. OVERPASSES, HIGH CONTOUR AREAS) WHERE THE INFLUENCE OF THE GROUND ON THE WIND IS REDUCED, ALLOWABLE SIGN PANEL AREAS MUST BE REDUCED (AS MUCH AS 40%) ACCORDING TO THE AASHTO "STANDARD SPECIFICATIONS FOR STRUCTURAL SUPPORTS FOR HIGHWAY SIGNS, LUMINAIRES AND TRAFFIC SIGNALS", UNDER THE SECTION "LOADS".  
 USE AN INCREASED WIND PRESSURE FOR SIGN PANEL CENTROID HEIGHTS 8.84 m OR MORE ABOVE THE SURROUNDING TERRAIN, AS FOLLOWS:  
 ZONE A (REGIONS 1,2,6,8 AND 9): 977 N/m<sup>2</sup>  
 ZONE B (REGIONS 3,4,5,7,10 AND 11): 1321 N/m<sup>2</sup>

THESE DETAILS ARE SKETCH DRAWINGS AND ARE NOT TO SCALE  
 DIMENSIONS ARE IN MILLIMETERS UNLESS OTHERWISE NOTED

 <p><b>STATE OF NEW YORK</b> DEPARTMENT OF TRANSPORTATION</p>	
<p>MATERIALS DETAILS FOR TYPE A SIGN SUPPORTS</p>	
<p>CHICAGO HEIGHTS STEEL U CHANNEL SIGN SUPPORTS STANDARD CAPACITY</p>	
<p>SHEET 5 OF 5</p>	
ISSUED UNDER EB 06-021 EFFECTIVE: 05/02/2006 REVISION:	MD645M-CHS-05

FILE NAME = IP:\PMP\dms61672\CHI.L.M.STDL.SHEET5.DGN  
 DATE/TIME = 05-MAY-2006 14:07  
 USER = ofr-ank