

POST SIZE	AREA (in ²)	I (in ⁴)	S (in ³)	A	B	C	D	E	MOMENT*
2.00 lb/ft	0.55	0.16	0.19	1.503	3.125	1.250	0.114	0.116	931 ft-lbs
2.50 lb/ft	0.69	0.21	0.26	1.549	3.125	1.250	0.160	0.130	1274 ft-lbs
3.00 lb/ft	0.86	0.34	0.36	1.750	3.500	1.625	0.160	0.150	1764 ft-lbs
4.00 lb/ft	1.15	0.45	0.47	1.810	3.500	1.625	0.220	0.162	2303 ft-lbs

* REDUCE MOMENT CAPACITY BY 25% TO ACCOUNT FOR TORSION EFFECTS IN OPEN CROSS-SECTION SINGLE POST INSTALLATIONS.

POSTS SHALL BE PRODUCED FROM HIGH STRENGTH RAIL STEEL ACCORDING TO ASTM A-499, HAVING A 70 KSI MINIMUM YIELD (SEE TABLE 1).

SIGN POSTS SHALL BE PUNCHED THEIR FULL LENGTH WITH 3/8" Ø HOLES ON 1" CENTERS.

BASE POSTS SHALL BE PUNCHED WITH A MINIMUM OF THIRTY-SIX 3/8" Ø HOLES ON 1" CENTERS (TO ACCOMMODATE OPTIONAL SOIL PLATE) WITH THE FIRST HOLE 1" FROM THE TOP.

BASE POSTS SHALL BE DRIVEN TO 38" MINIMUM EMBEDMENT (SEE TABLE 2); A MAXIMUM OF 4" MAY PROTRUDE ABOVE THE SURROUNDING GROUND SURFACE.

POSTS SHALL BE HOT-DIP GALVANIZED AFTER FABRICATION IN ACCORDANCE WITH ASTM A-123.

SPLICE HARDWARE SHALL BE AS SUPPLIED OR RECOMMENDED BY THE MANUFACTURER, CADMIUM PLATED ACCORDING TO ASTM A-165, TYPE OS, EXCEPT USING CLEAR CHROMATE.

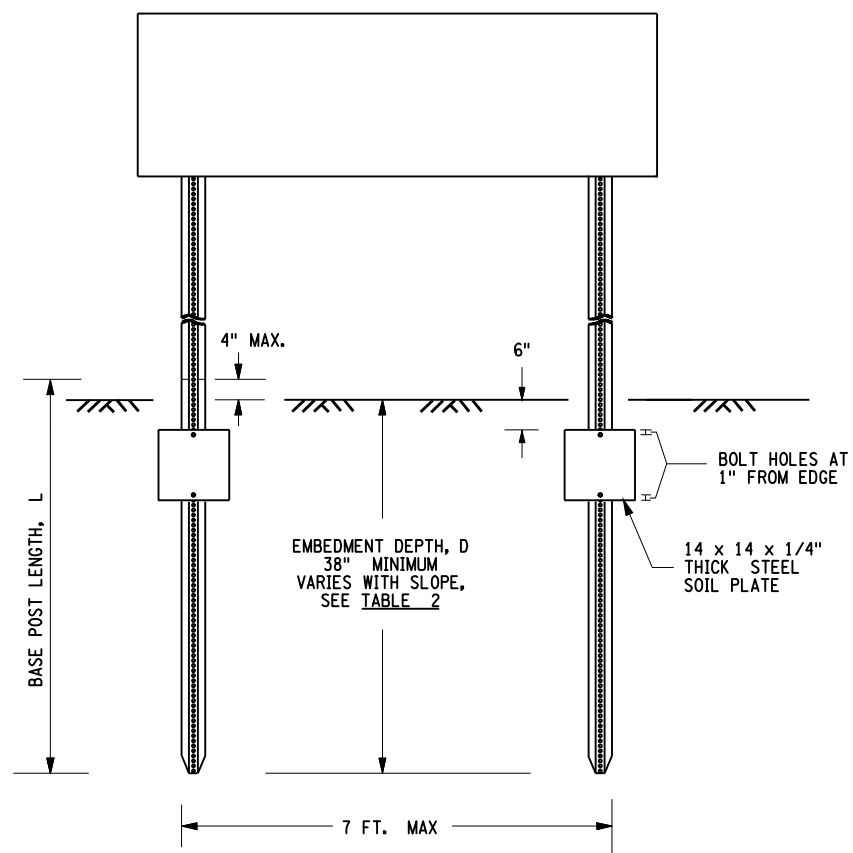
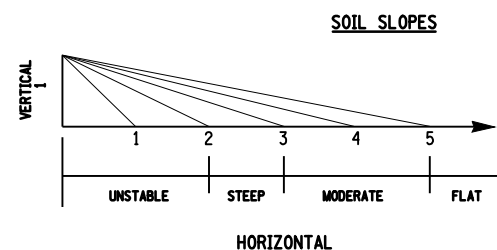
ALL GALVANIZING AND GALVANIZING REPAIRS SHALL BE DONE IN ACCORDANCE WITH §719-01, TYPE III.

AN S-1 SOIL CONDITION SHOULD BE ASSUMED. S-1 INCLUDES SANDS, GRAVELS AND SILTS (AND THEIR MIXTURES) WHICH EXHIBIT PENETRATION VALUES OF 9 OR MORE BLOWS PER FOOT USING A STANDARD 300 LB. DROP HAMMER AND AN 18 INCH FALL. SHOULDER MATERIALS ARE INCLUDED IN THIS CATEGORY.

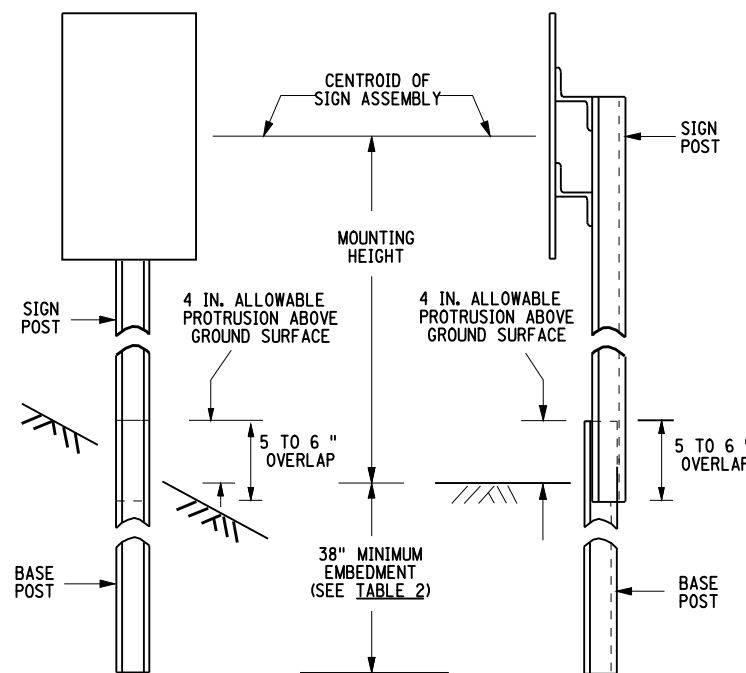
S-2 INCLUDES UNIFORM SANDS WHICH EXHIBIT PENETRATION VALUES OF LESS THAN 9 BLOWS PER FOOT USING A 300 LB. DROP HAMMER. BEACH SANDS ARE INCLUDED IN THIS CATEGORY.

THE GEOTECHNICAL ENGINEERING BUREAU AND THE STRUCTURES DIVISION SHOULD BE CONTACTED WHEN A POST IS TO BE PLACED IN A PLASTIC (SOFT CLAY OR ORGANIC) DEPOSIT, OR WHEN THE GROUNDWATER ELEVATION IS WITHIN THE MINIMUM EMBEDMENT.

EMBEDMENT TYPE	SOIL SLOPE	SOIL DESCRIPTION					
		S - 1 NON-PLASTIC (MED TO VERY COMPACT)			S - 2 NON-PLASTIC (LOOSE TO VERY LOOSE)		
		MAX NO. OF POSTS	MIN. EMBEDMENT	SOIL ρ	MAX NO. POSTS	MIN. EMBEDMENT	SOIL ρ
ERECT-EASE	FLAT	2	38	NO	1	38	YES
	MODERATE	2	54	NO	1	54	YES
	STEEP	2	60	NO	1	60	YES
BASE BOLTED OR BRACER BAR	FLAT	3	38	NO	3	60	YES
	MODERATE	3	54	NO	3	60	YES
	STEEP	3	60	NO	3	60	YES




SOIL PLATE DETAIL

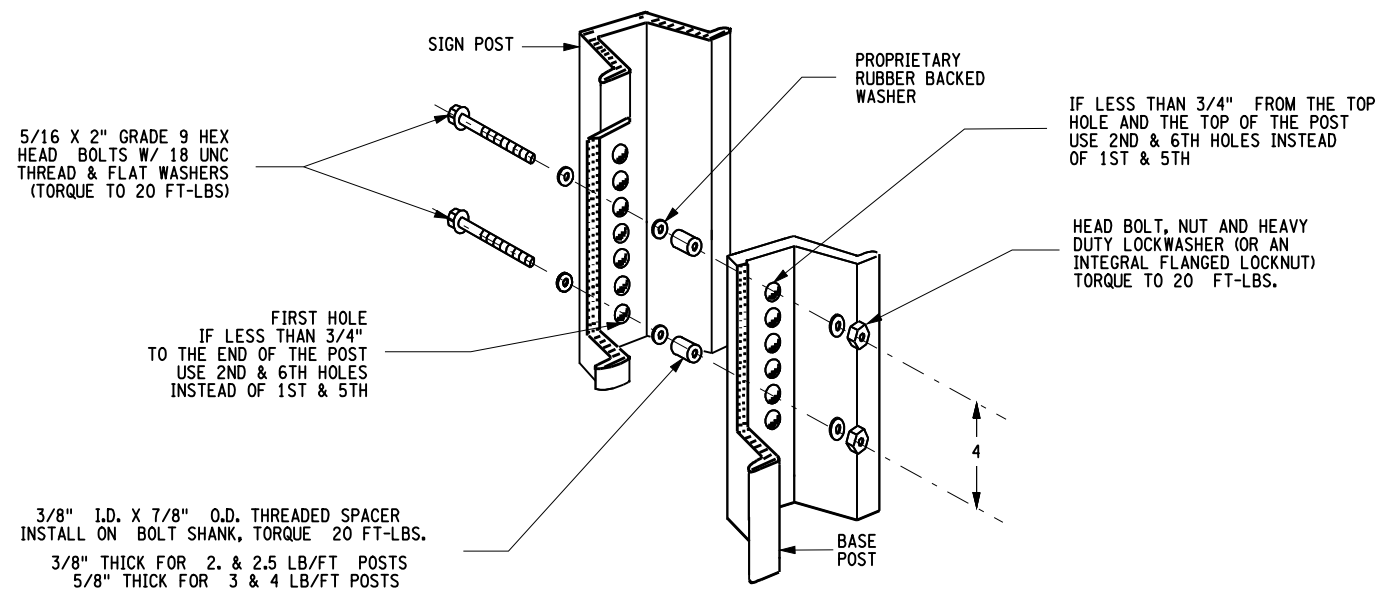


EMBEDMENT DETAILS

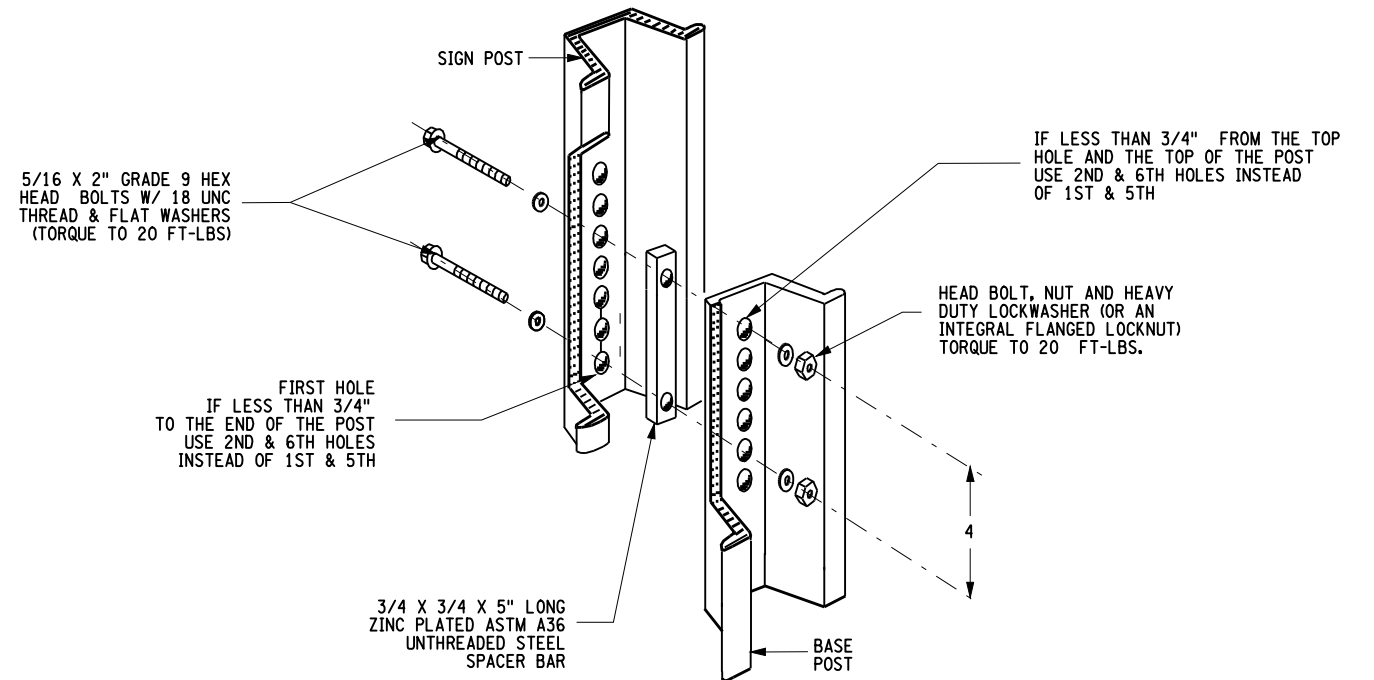
THESE DETAILS ARE SKETCH DRAWINGS AND ARE NOT TO SCALE DIMENSIONS ARE IN INCHES UNLESS OTHERWISE NOTED

 STATE OF NEW YORK DEPARTMENT OF TRANSPORTATION	
MATERIALS DETAILS FOR TYPE A SIGN SUPPORTS	
CHICAGO HEIGHTS STEEL U CHANNEL SIGN SUPPORTS STANDARD CAPACITY	
SHEET 1 OF 5	
ISSUED UNDER EB 06-021 EFFECTIVE: 05/02/2006 REVISION:	MD645E-CHS-01

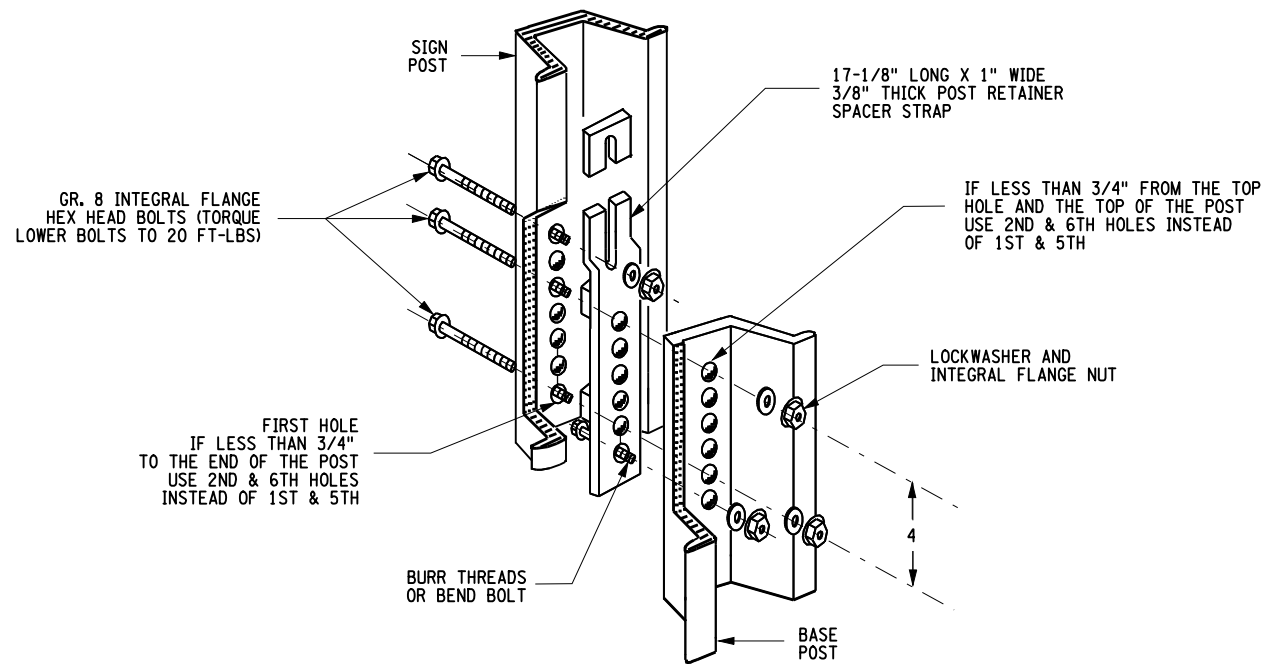
FILE NAME = IP:\PMP\dms61672\CHILE.STD\SHEET1.DGN
 DATE/TIME = 05-MAY-2006 14:04
 USER = ofr-ank



BASE-BOLTED SAFETY SPLICE




BRACER BAR SPLICE



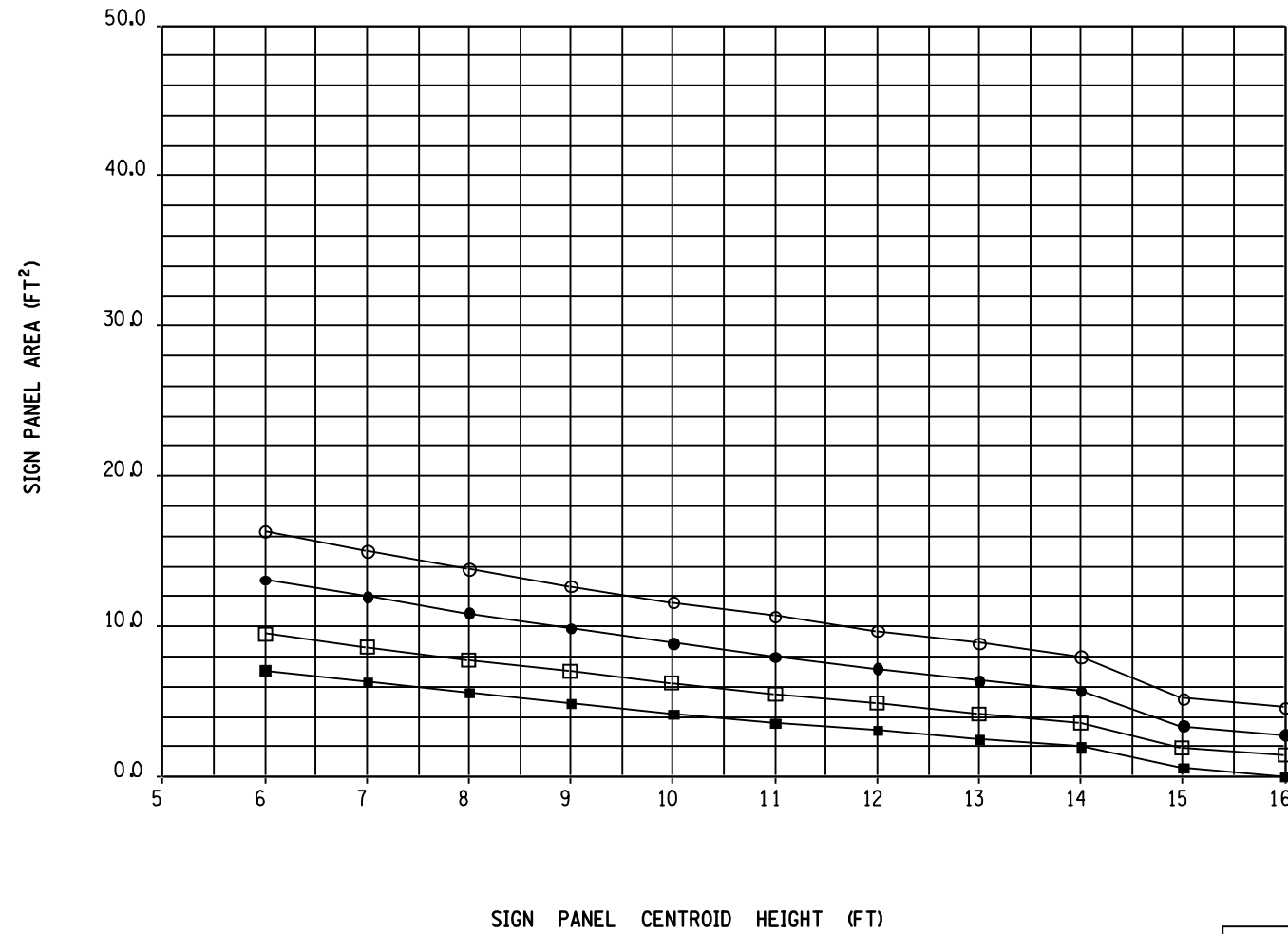
ERECT-EASE SPLICE

THESE DETAILS ARE SKETCH DRAWINGS AND ARE NOT TO SCALE
DIMENSIONS ARE IN INCHES UNLESS OTHERWISE NOTED

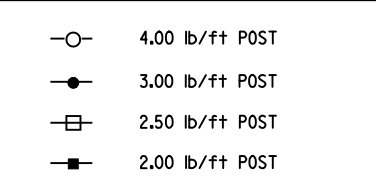
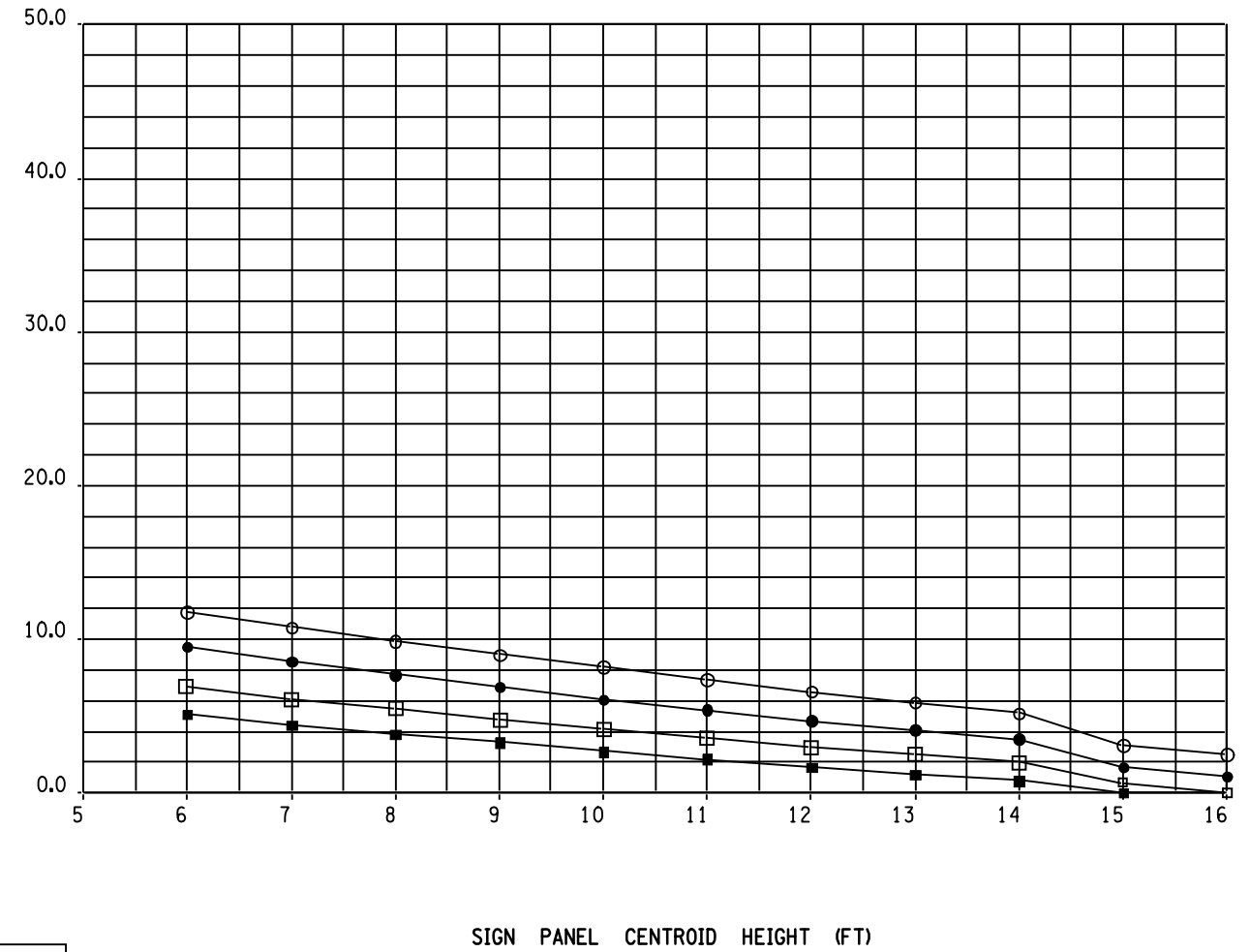
 STATE OF NEW YORK DEPARTMENT OF TRANSPORTATION	
MATERIALS DETAILS FOR TYPE A SIGN SUPPORTS	
CHICAGO HEIGHTS STEEL U CHANNEL SIGN SUPPORTS STANDARD CAPACITY	
SHEET 2 OF 5	
ISSUED UNDER EB 06-021 EFFECTIVE: 05/02/2006 REVISION:	MD645E-CHS-02

SINGLE POST

60 MPH WIND SPEED




70 MPH WIND SPEED



CAUTION : ALLOWABLE SIGN PANEL AREAS ARE CALCULATED ASSUMING SITE ELEVATIONS CLOSE TO THE SURROUNDING TERRAIN.
 FOR ELEVATED SITE CONDITIONS (E.G. OVERPASSES, HIGH CONTOUR AREAS) WHERE THE INFLUENCE OF THE GROUND ON THE WIND IS REDUCED, ALLOWABLE SIGN PANEL AREAS MUST BE REDUCED (AS MUCH AS 40%) ACCORDING TO THE AASHTO "STANDARD SPECIFICATIONS FOR STRUCTURAL SUPPORTS FOR HIGHWAY SIGNS, LUMINAIRES AND TRAFFIC SIGNALS", UNDER THE SECTION "LOADS".
 USE AN INCREASED WIND PRESSURE FOR SIGN PANEL CENTROID HEIGHTS 29.0 FT OR MORE ABOVE THE SURROUNDING TERRAIN, AS FOLLOWS:
 ZONE A (REGIONS 1,2,6,8 AND 9): 20.4 PSF
 ZONE B (REGIONS 3,4,5,7,10 AND 11): 27.6 PSF

THESE DETAILS ARE SKETCH DRAWINGS AND ARE NOT TO SCALE
 DIMENSIONS ARE IN INCHES UNLESS OTHERWISE NOTED

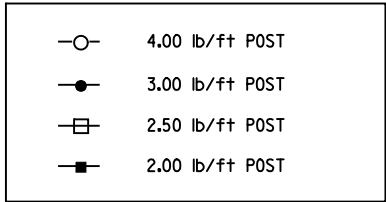
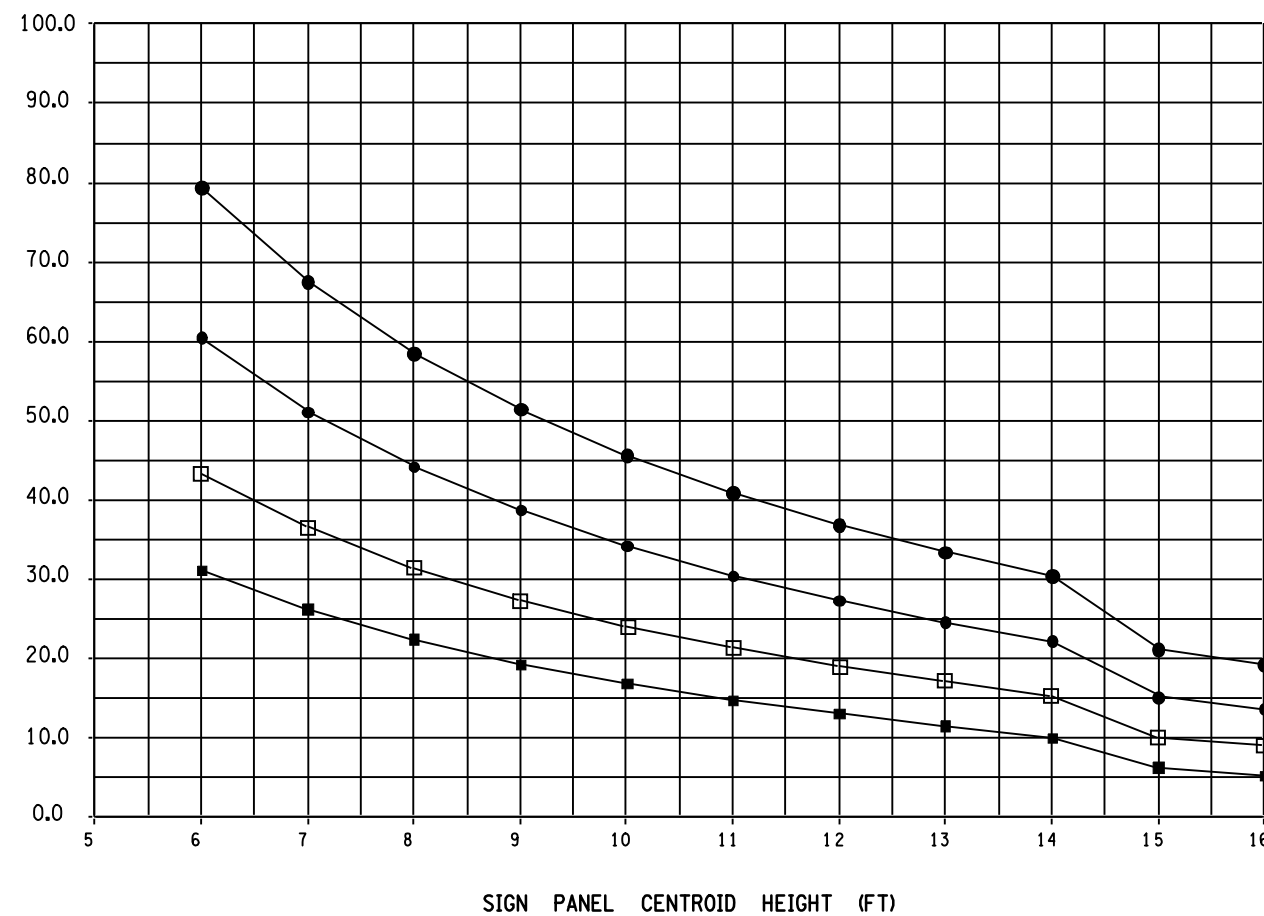
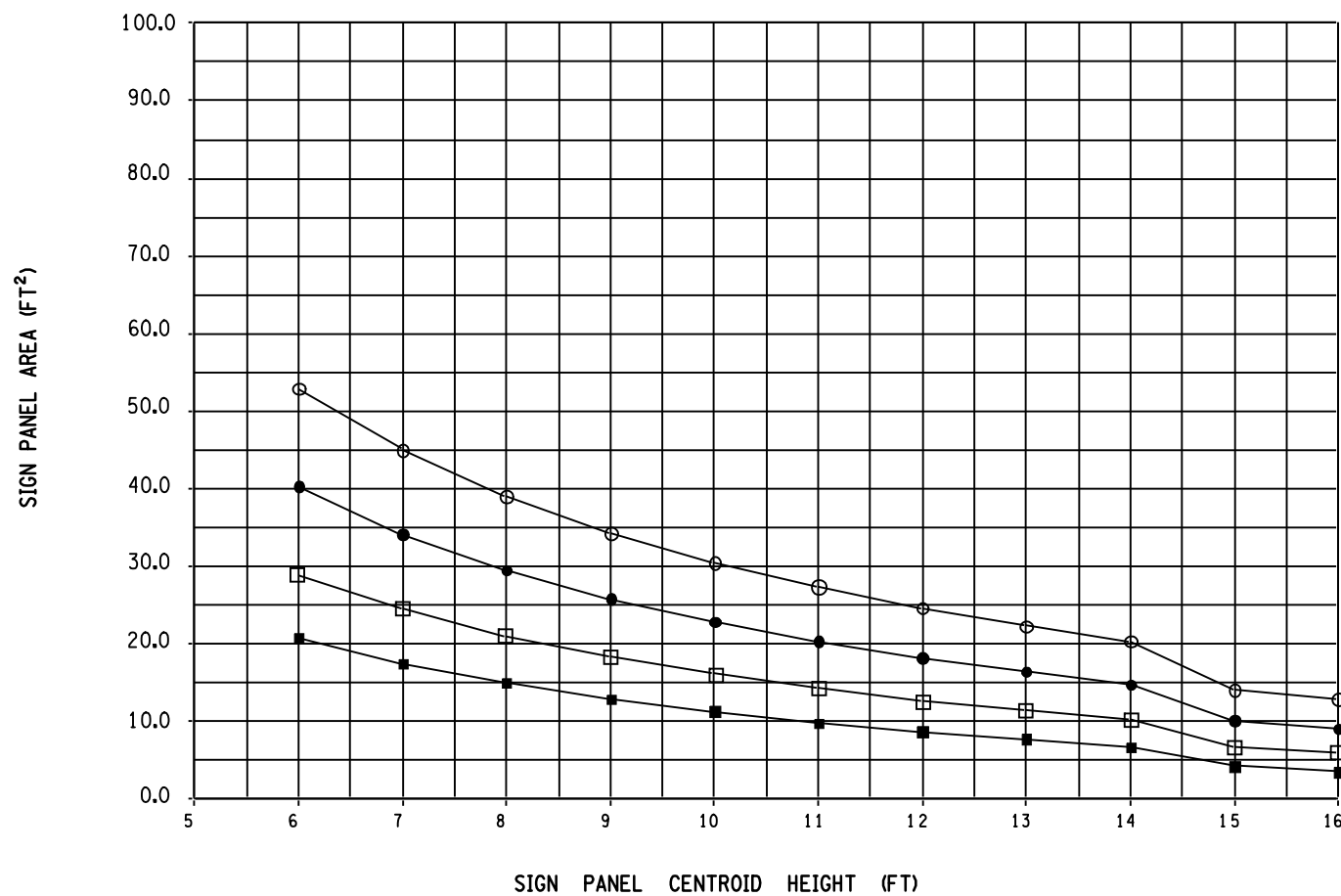
 <p>STATE OF NEW YORK DEPARTMENT OF TRANSPORTATION</p>	
<p>MATERIALS DETAILS FOR TYPE A SIGN SUPPORTS</p>	
<p>CHICAGO HEIGHTS STEEL U CHANNEL SIGN SUPPORTS STANDARD CAPACITY</p>	
<p>SHEET 3 OF 5</p>	
<p>ISSUED UNDER EB 06-021 EFFECTIVE: 05/02/2006 REVISION:</p>	<p>MD645E-CHS-03</p>

FILE NAME = IP_PWPdms61672\CHILE.STD.SHEET3.DGN
 DATE/TIME = 05-MAY-2006 14:05
 USER = ofrank

60 MPH WIND SPEED

DOUBLE POST

TRIPLE POST




CAUTION : ALLOWABLE SIGN PANEL AREAS ARE CALCULATED ASSUMING SITE ELEVATIONS CLOSE TO THE SURROUNDING TERRAIN.

FOR ELEVATED SITE CONDITIONS (E.G. OVERPASSES, HIGH CONTOUR AREAS) WHERE THE INFLUENCE OF THE GROUND ON THE WIND IS REDUCED, ALLOWABLE SIGN PANEL AREAS MUST BE REDUCED (AS MUCH AS 40%) ACCORDING TO THE AASHTO "STANDARD SPECIFICATIONS FOR STRUCTURAL SUPPORTS FOR HIGHWAY SIGNS, LUMINAIRES AND TRAFFIC SIGNALS", UNDER THE SECTION "LOADS".

USE AN INCREASED WIND PRESSURE FOR SIGN PANEL CENTROID HEIGHTS 29.0 FT OR MORE ABOVE THE SURROUNDING TERRAIN, AS FOLLOWS:

ZONE A (REGIONS 1,2,6,8 AND 9): 20.4 PSF
 ZONE B (REGIONS 3,4,5,7,10 AND 11): 27.6 PSF

THESE DETAILS ARE SKETCH DRAWINGS AND ARE NOT TO SCALE
 DIMENSIONS ARE IN INCHES UNLESS OTHERWISE NOTED

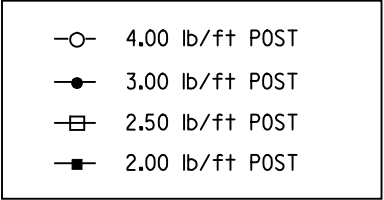
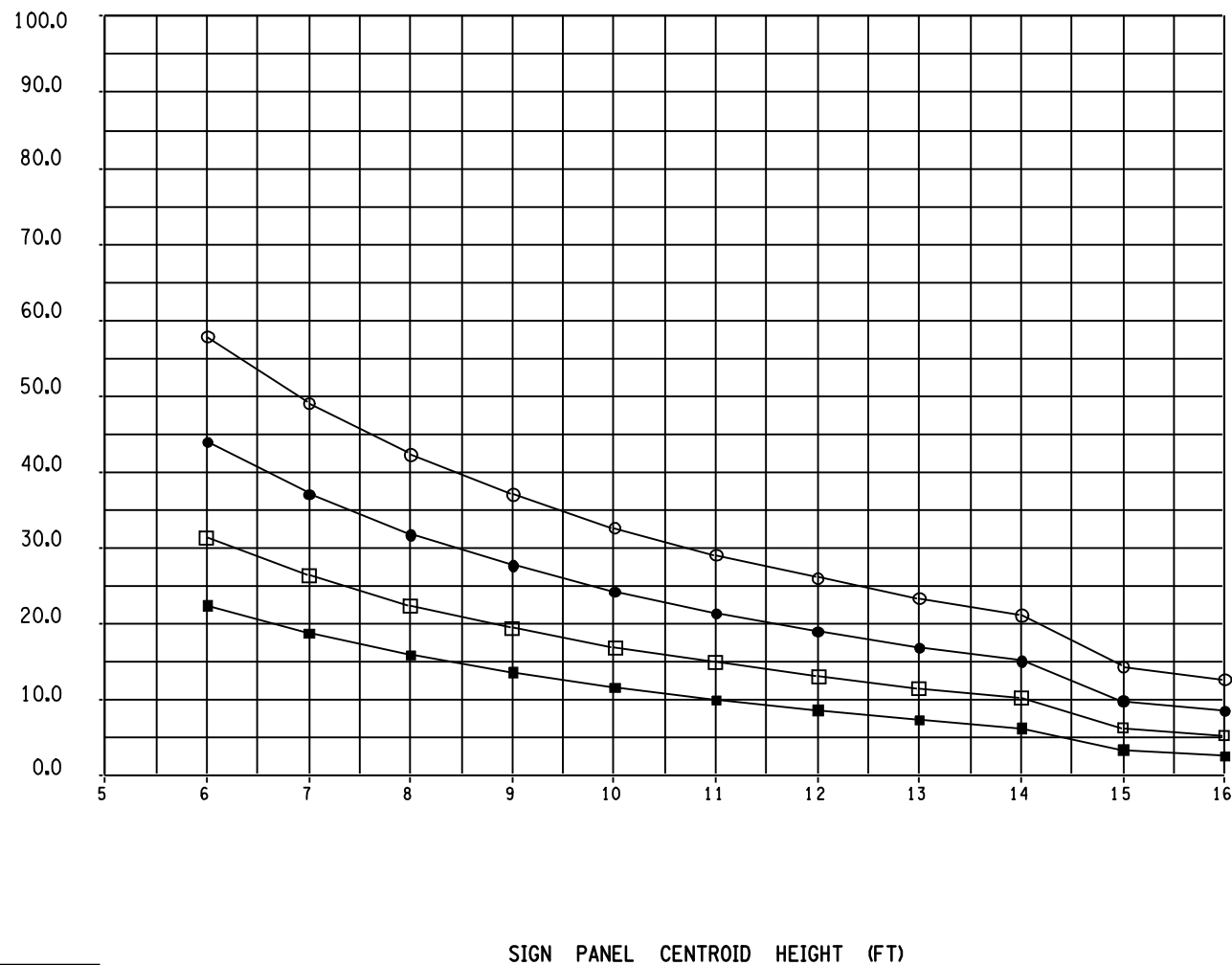
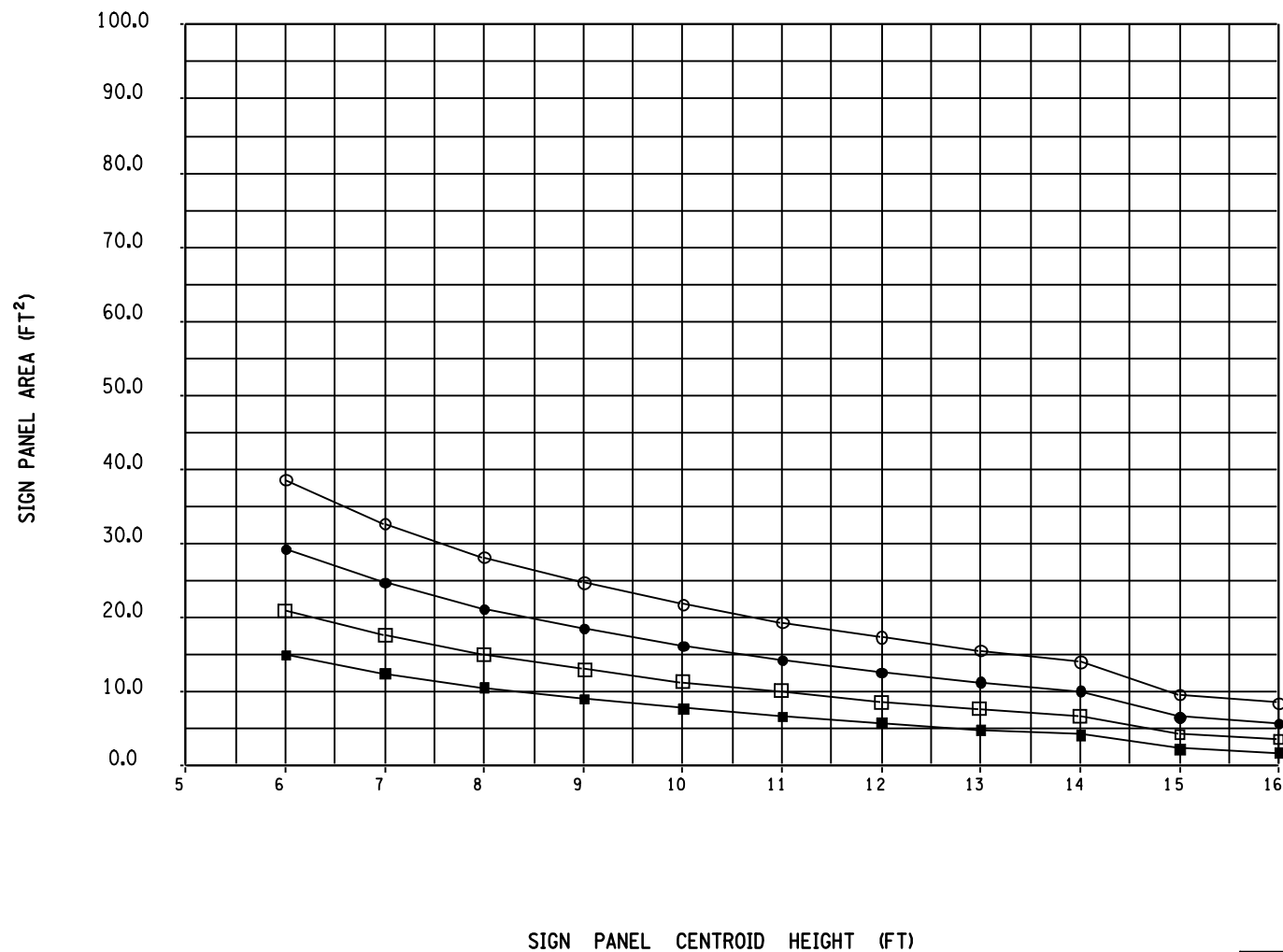
 <p>STATE OF NEW YORK DEPARTMENT OF TRANSPORTATION</p>	
<p>MATERIALS DETAILS FOR TYPE A SIGN SUPPORTS</p>	
<p>CHICAGO HEIGHTS STEEL U CHANNEL SIGN SUPPORTS STANDARD CAPACITY</p>	
<p>SHEET 4 OF 5</p>	
ISSUED UNDER EB 06-021 EFFECTIVE: 05/02/2006 REVISION:	MD645E-CHS-04

FILE NAME = IP_PWPdms61672\CHILE.STD.SHEET4.DGN
 DATE/TIME = 05-MAY-2006 14:05
 USER = ofrank

70 MPH WIND SPEED


DOUBLE POST

TRIPLE POST



CAUTION : ALLOWABLE SIGN PANEL AREAS ARE CALCULATED ASSUMING SITE ELEVATIONS CLOSE TO THE SURROUNDING TERRAIN.
 FOR ELEVATED SITE CONDITIONS (E.G. OVERPASSES, HIGH CONTOUR AREAS) WHERE THE INFLUENCE OF THE GROUND ON THE WIND IS REDUCED, ALLOWABLE SIGN PANEL AREAS MUST BE REDUCED (AS MUCH AS 40%) ACCORDING TO THE AASHTO "STANDARD SPECIFICATIONS FOR STRUCTURAL SUPPORTS FOR HIGHWAY SIGNS, LUMINAIRES AND TRAFFIC SIGNALS", UNDER THE SECTION "LOADS".
 USE AN INCREASED WIND PRESSURE FOR SIGN PANEL CENTROID HEIGHTS 29.0 FT OR MORE ABOVE THE SURROUNDING TERRAIN, AS FOLLOWS:
 ZONE A (REGIONS 1,2,6,8 AND 9): 20.4 PSF
 ZONE B (REGIONS 3,4,5,7,10 AND 11): 27.6 PSF

THESE DETAILS ARE SKETCH DRAWINGS AND ARE NOT TO SCALE
 DIMENSIONS ARE IN INCHES UNLESS OTHERWISE NOTED

 <p>STATE OF NEW YORK DEPARTMENT OF TRANSPORTATION</p>	
<p>MATERIALS DETAILS FOR TYPE A SIGN SUPPORTS</p>	
<p>CHICAGO HEIGHTS STEEL U CHANNEL SIGN SUPPORTS STANDARD CAPACITY</p>	
<p>SHEET 5 OF 5</p>	
ISSUED UNDER EB 06-021 EFFECTIVE: 05/02/2006 REVISION:	MD645E-CHS-05